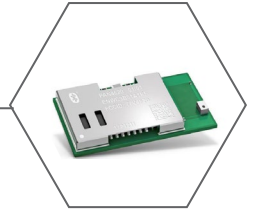


## New Product Introduction

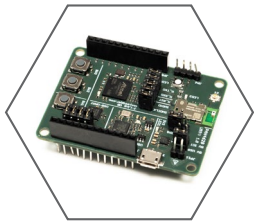
### PAN4620 Series IEEE® 802.15.4 and Bluetooth® Low Energy Module Panasonic's New Internet Of Things, Dual Mode Mesh Networking RF Module!



Introducing Panasonic's NEW PAN4620 Series RF Module! The PAN4620 Series is Panasonic's Internet of Things Dual Mode RF Module comprising NXP's Kinetis KW41Z SoC - a 2.4 GHz 802.15.4 and Bluetooth® Low Energy wireless radio microcontroller with an integrated ARM® Cortex-M0+ core.

To provide maximum flexibility, the New PAN4620 Series Module can be operated in stand-alone and hosted mode. With 512 kB flash memory and 128 kB SRAM, the PAN4620 can easily be used as a stand-alone controller eliminating the need for an external processor, reducing complexity, space and cost. It is thus well suited for very small and low-power applications. Integration of 802.15.4 and/or BLE connectivity into existing applications can also easily be achieved when using the New PAN4620 in hosted mode.

Using the New PAN4620 with low power consumption in combination with NXP's certified Thread® stack, BLE stack or a combination of both for concurrent operation allows meeting IoT application requirements without the need for a gateway.



Since Thread® does not define an application layer, various application layers can be used, such as dotdot, IoTivity, OpenDOF, and others.

The New PAN4620 Evaluation Kit is an all-inclusive and comprehensive Evaluation Kit consisting of one daughter board in an ESD bag.

## General Features and Benefits

- Same Form Factor And Pinout As PAN1026, PAN1760, PAN1760A And PAN1761
- Embedded 512 kB Of Flash And 128 kB Of SRAM
- UART, SPI, I<sup>2</sup>C, TSI, ADC & DAC And Programmable I/O
- Single And Concurrent Operation Of IEEE® 802.15.4 And BLE
- Open To Various Known Application Layers Or Proprietary Solutions
- RoHS and REACH Compliant

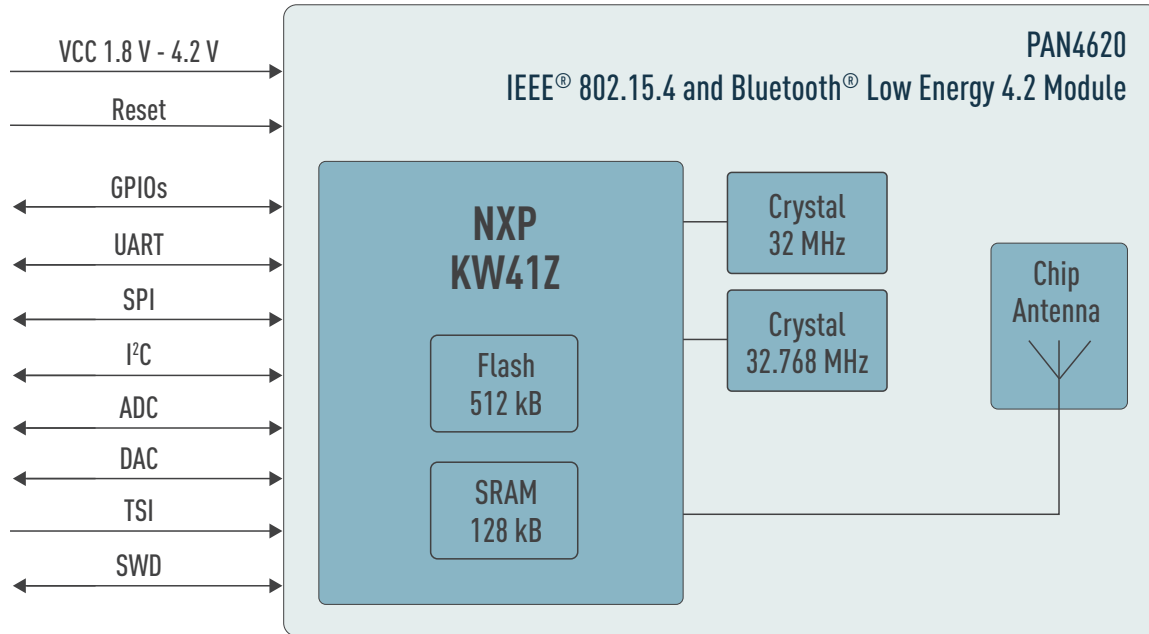
## Advanced IoT and BLE Features

- IEEE® Standard 802.15.4 Compliant
- Supporting Software Consisting Of 802.15.4 MAC/PHY Implementation
- Simple Media Access Controller (SMAC) And Certified Thread® Stack
- Bluetooth® LE 4.2 Compliant Implementation Certified By Bluetooth SIG
- Supporting Software Consisting Of BLE Host Stack And Profiles, BLE
- Mesh, And IPv6 6LoBLE
- Bluetooth Developer Studio Plug-In

## Part Numbers

Part Number	Description	Series Number
ENW-C9B01A1EF	IEEE® 802.15.4 and Bluetooth® Low Energy 4.2 Module	PAN4620
ENWC9B01AQEF	One Daughter Board In ESD Bag	PAN4620 Evaluation Kit

## Block Diagram



## Technical Characteristics

Parameter	Value	Condition / Note
Receiver Sensitivity	-93 dBm	IEEE® Standard 802.15.4
Programmable Output Power	-30dBm to 3dBm	Maximum Setting
Power Supply	1.8 V to 4.2 V	Single Operation Voltage
Operating Temperature	-40°C to +85°C	Industrial Range
Tx/Rx current Consumption	7.6/8.5mA	Peak Current And Low Power Modes Available