

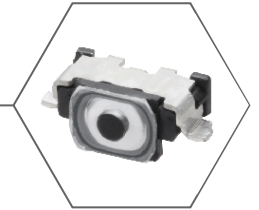
New Product Introduction

EVP-AT Series

Side-Operational, Edge-Mount Light Touch Switch

Side-Push, Edge-Mount SMD Light Touch Switch

Panasonic, a worldwide leader in Electromechanical Products, introduces the **NEW EVP-AT Series** Light Touch Switch. Low profile at 3.4mm x 1.7mm this new switch features a dome behind the actuator and is IP67 rated.



Features

- Low Profile: 3.4mm x 1.7mm (Excluding the Push Plate), Height 1.6mm (Printed Circuit Board Being As Low As 1.105mm)
- Dome Behind Actuator
- Laser Welded Technology
- Edge-Mount Design
- IP67 Rated
- RoHS and REACH Compliant

Benefits

- Slim Set Design
- Sharp Tactile Feedback
- High Peel Off Strength
- AEC-Q200 Compliance ensures strict quality control standards are being enforced.

Applications

- Portable Electronic Equipment
- Wearables
- Blood Glucose Meters

Industries

- Consumer
- Medical / Healthcare