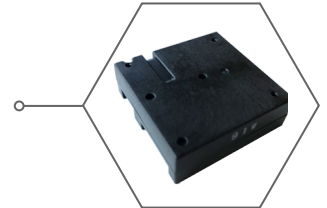


New Product Introduction

Laser Type Particulate Matter (PM) Sensor SN-GC Series



Panasonic Expands Its' Sensor Technology Offering To Include The New Laser Type Particulate Matter Sensor

Panasonic, a worldwide leader in Sensors technology, is pleased to introduce the **New Laser Type Particulate Matter (PM) Sensor** to its' already broad range of specialty Sensor solutions.

Panasonic's **New Laser Type Particulate Matter Sensor** is comprised of an on-board microprocessor, Micro-fan, and Laser Diode. This New Sensor has been programmed so that the Fan will operate based on the amount of particle dust surrounding the Laser Diode so that overall lifespan or usefulness of the Sensor can be extended much longer than its' average commercially available equivalent.

Featuring a very small footprint of W37 x D37 x H12 mm, the **New Panasonic Laser Type Particulate Matter Sensor** can be used to detect a wide variety of Particulate Matter including but not limited to dust, fly ash, soot, smoke, aerosols, fumes, mists and condensing vapors, solid fuels, construction materials, cooking / smoking of plant matter, fireplaces and furnaces, house / forest fires, waste incineration and much more.

Features and Benefits

- Panasonic's On-Board Micro-Processor Makes It Unnecessary For Customers To Design Their Own
- The Inclusion Of A Micro-Fan Is More Efficient Than Simply Having A Heating Element To Draw Air Into The Sensor
- Panasonic's Particulate Matter Sensor Provides More Accurate Light Scattering Performance Using A Laser Diode Than Light Emitting Diodes (LED)
- Panasonic's Proprietary Algorithm Controls Fan And Laser Diode Efficiency For Prolonged Product Life
- RoHS And REACH Compliant

Industries

- Retail
- Medical
- Electronics
- Smart City / Smart Building

Applications

- Indoor And Outdoor Air Quality Monitoring
- Airborne Dust Detection
- Near / In Clean Rooms; Semiconductor, PCBD Mfg., Etc.