

The industry's
first^(*1)

Simple robot teaching system

Virtual Robot Programming System (VRPS)

*Utilization of Virtual Reality (VR)
Realize "Simple robot teaching"
with intuitive operation*

Teaching using VRPS

Conventional
teaching



Panasonic robot:
GIII/WGIII/WGHIII series



VR equipment^(*2)



Optional software VRPS
YA-1VPCV1

Efficiency



Reduced teaching time by utilizing VR equipment

Usability



Allowed intuitive operation to the actual work

For everyone



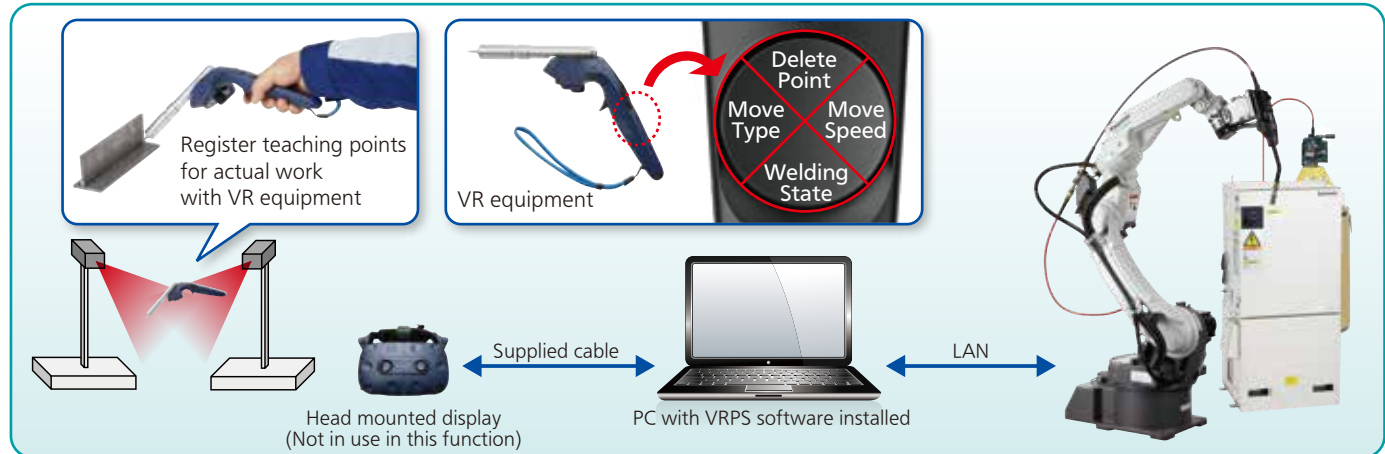
No professional skill is needed for teaching

(*1) In the industry of the VR teaching equipment of welding robot using actual works. (According to our research as of April 21, 2020)

(*2) Our company specified equipment

■ Outline of “Simple robot teaching” system

It enables a user who is unfamiliar with robot operation to easily perform robot teaching. Use the VR equipment and register teaching points for the actual work.



■ Product form

Product of Panasonic



Customer preparation



	Name	Remarks
1.	Software (CD-ROM)	Product of Panasonic: YA-1VPCV1
2.	USB license key	"
3.	Torch model	"
4.	PC	Customer preparation
5.	VR equipment	Customer preparation (Our company specified equipment)
6.	LAN cable	Customer preparation

*Please setup the PC/VR equipment at customer's end.

■ Comparison of teaching time

(Measurements under the condition specified by our company)

Teaching points:
Approx. 80 points
(Weld section:
Approx. 30 points)



Teaching method	Teaching time	Correction time	Addition of weld commands	Total
Actual machine	2 hours (90 s/point)	None	Add while teaching	2 hours
Offline software	1 hour (45 s/point)	30 min.	The same as above	1.5 hours
VRPS (*)	Approx. 7 min. (5 s/point)	30 min.	Approx. 10 min.	47 min.

* About positional accuracy: Displacement will occur. Prior to operation, perform operating check and position correction.

To improve positional accuracy:

- 1) Maintain the tracking of the head mounted display while teaching.
- 2) Operate the VR equipment about 30 seconds before performing calibration or teaching operation.
- 3) Adjust the TCP of the robot properly.
- 4) Perform the TCP adjustment of the torch model installed on the VR equipment.

■ Operating environment

VR equipment	HTC VIVE Pro (Our company specified equipment: For details, please contact Panasonic representatives.)			
CPU	Intel® Core™ i5-4590 or the equivalent or higher class			
Graphics	NVIDIA® GeForce® GTX 1060 or the equivalent or higher			
Memory	4 GB RAM or more			
Video output	DisplayPort 1.2 or higher			
USB port	USB 3.0 port or higher, 2 ports			
OS	Windows®10 or higher			

Make sure that the applied PC should satisfy the above specifications or higher. If not, the software, especially graphic, won't run.



Safety precautions

- Before attempting to use any welding product, always read the manual to ensure correct use.

Panasonic Connect Co., Ltd

Process Automation Business Division, Customer Success Core Center,
Thermal Fabrication System Business Unit
3-1-1, Inazu, Toyonaka, Osaka 561-0854, Japan
TEL: +81-6-6866-8505 <https://connect.panasonic.com/en/>

Panasonic Welding Systems (Tangshan) Co., Ltd.

No.9 Qingnan Rd., Tangshan New & Hi-Tech Industrial Park,
063020 Hebei, China
TEL: +86-315-320-6060 <https://pwst.panasonic.cn>

Panasonic Smart Factory Solutions India

A Division Company of Panasonic Life Solutions India Pvt. Ltd.
12th Floor, Ambience Tower, Ambience Island, NH-8, Gurugram,
Haryana-122002, India
TEL: +91-97-2990-0200

Panasonic Industrial Devices Sales Taiwan Co., Ltd.

12F, No.9, SongGao Rd., Taipei 110, Taiwan, R.O.C.
TEL: +886-2-2757-1887 <http://industrial.panasonic.com/tw>

Panasonic Connect North America

1701 Golf Road, Suite 3-1200 Rolling Meadows, IL 60008 USA
TEL: +1-847-637-9700 <http://www.panasonicfa.com>

Panasonic Industry Europe GmbH

Jagenbergstr 11a, D-41468 Neuss Germany
TEL: +49-2131-60899-0 <http://eu.industrial.panasonic.com/>

Panasonic do Brasil Limitada

Rua Alexandre Dumas, 1711-8° Andar-Torre 11
Chacara Sto. Antonio, Sao Paulo-SP CEP 04717-911
Tel: +55 11 3889-4000

Panasonic Industrial Devices Sales (Thailand) Co., Ltd.

252/133 Muang Thai - Phatra Complex Building, 31st Fl.
Rachadaphisek Rd., Huaykwang, Bangkok 10320, Thailand
TEL: +66-2-693-3421

Panasonic Factory Solutions Asia Pacific Pte. Ltd.

285 Jalan Ahmad Ibrahim, Singapore 639931
Tel: +65-6861 6655 <https://pfsap.sg.panasonic.com>

● Specifications are subject to change without notice.

● Windows is a registered trademark of Microsoft Corporation in the United States and other countries.

Catalog No.

IR0010E

Printed in Japan [2020.8] 2-002P