

④ YT-35CV4

Welding Torch for CO₂/MAG Welding

Easier Operation and Stronger Structure!



- Welding torch for welding mild steel and stainless steel.
- CC fitting connection type.

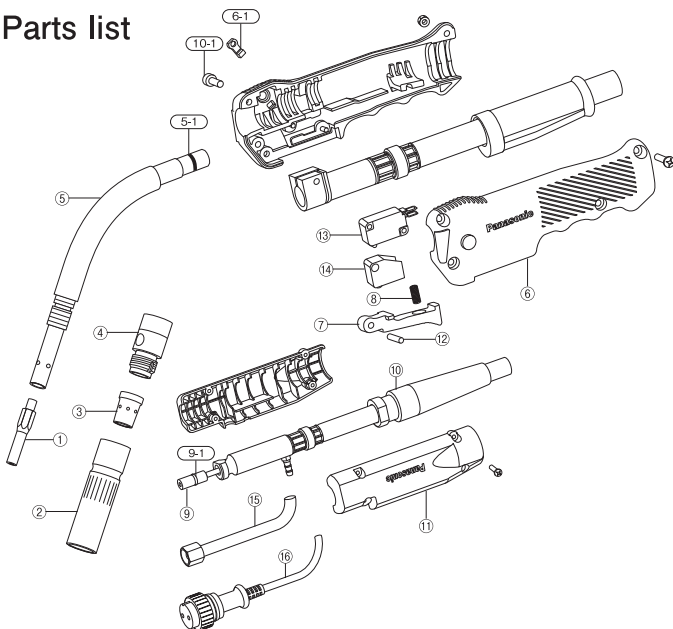
■ Specifications

Model	Rated Current (A)	Cooling Method	Rated Duty Cycle (%)	Applicable Wire Diameter (mm)				Cable Length (m)
				0.9	1.0	1.2	1.4	
YT-35CV4	350	Air-cooled	45 (CO ₂) / 35 (MAG)	○	○	◎	○	3

Note:

- Torch is equipped with parts for the wire of "◎" diameter. Optional parts are required to use the wires of "○" diameters.
- 4.5 m cable length type also available.
- Rated duty cycle is based on IEC 60974-7.

Parts list

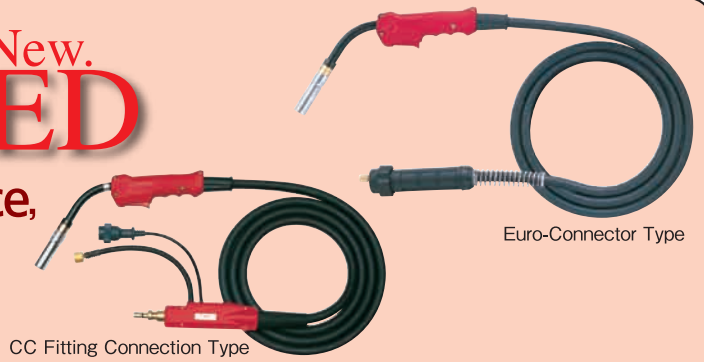


No.	Description	YT-35CV4
1	Contact tip	TET01296
2	Nozzle	TGN00143
3	Orifice	TGR01001
4	Insulator	TFZ35101
5	Torch body	TCX00877
5-1	O-ring	P8V
6	Handle C	TKC00029
6-1	Packing	TZV00002
7	Switch lever C	THL00002
8	Switch spring	TBN00003
9	Liner	TDT00398
9-1	O-ring	P7
10	Power cable	TDX00381
10-1	Clamping bolt	XVE5A15
11	Protection tube	TFP00018
12	Pin	XPJ4B18FJ
13	Micro switch	YTA16(AM59356A)
14	Switch cover	TSK50102
15	Gas hose assembly	TWG00046
16	Control cable assembly	TWU18102
—	Liner (4.5 m torch)	TDT00399
—	Power cable (4.5 m torch)	TDX00382

④ RED TORCH 4 All New. RED

Welding Torch for CO₂/MAG Welding

Higher Welding Performance, Operability and Safety.



■For Mild Steel and Stainless Steel CC Fitting Connection Type

Model No.	Rated Current (A)	Cooling Method	Rated Duty Cycle (%)	Applicable Wire Diameter (mm)						Cable Length (m)	Remarks	
				0.6	0.8	0.9	1.0	1.2	1.4			1.6
1 YT-18CS4	180	Air-cooled	40 (CO ₂) / 20 (MAG)	○	◎						3	
2 YT-20CS4	200	Air-cooled	50 (CO ₂) / 25 (MAG)			◎	○	○			3	
3 YT-35CE4	350	Air-cooled	20 (CO ₂) / 20 (MAG)			◎	○	○			3	Lightweight type
4 YT-35CEM4	350	Air-cooled	20 (CO ₂) / 20 (MAG)			◎	○	◎			4.5	Lightweight type
5 YT-35CS4	350	Air-cooled	45 (CO ₂) / 35 (MAG)			○	○	◎	○		3	
6 YT-35CSM4	350	Air-cooled	45 (CO ₂) / 35 (MAG)			○	○	◎			4.5	
7 YT-35CSL4	350	Air-cooled	45 (CO ₂) / 35 (MAG)			○	○	◎	○		6	
8 YT-35CH4	350	Air-cooled	60 (CO ₂) / 35 (MAG)			○	○	◎	○		3	High duty cycle
9 YT-35CHM4	350	Air-cooled	60 (CO ₂) / 35 (MAG)			○	○	◎	○		4.5	High duty cycle
10 YT-35CHL4	350	Air-cooled	60 (CO ₂) / 35 (MAG)			○	○	◎	○		6	High duty cycle
11 YT-35CSG4	350	Air-cooled	20 (Pulsed MAG) / 45 (CO ₂) / 35 (MAG)			○	○	◎	○		3	For pulse welding
12 YT-50CE4	500	Air-cooled	25 (CO ₂) / 20 (MAG)					○	◎	○	3	Lightweight type
13 YT-50CEM4	500	Air-cooled	25 (CO ₂) / 20 (MAG)					○	◎	○	4.5	Lightweight type
14 YT-50CEL4	500	Air-cooled	25 (CO ₂) / 20 (MAG)					○	◎	○	6	Lightweight type
15 YT-50CS4	500	Air-cooled	40 (CO ₂) / 35 (MAG)					○	◎	○	3	
16 YT-50CSM4	500	Air-cooled	40 (CO ₂) / 35 (MAG)					○	◎	○	4.5	
17 YT-50CSL4	500	Air-cooled	40 (CO ₂) / 35 (MAG)					○	◎	○	6	
18 YT-50CSG4	500	Air-cooled	20 (Pulsed MAG 350 A) / 40 (CO ₂) / 35 (MAG)					○	◎	○	3	For pulse welding

Euro-Connector Type

Model No.	Rated current (A)	Cooling type	Duty cycle (%)	Applicable Wire Diameter (mm)						Cable Length (m)	Remarks	
				0.6	0.8	0.9	1.0	1.2	1.4			1.6
19 YT-18ES4	180	Air-cooled	40 (CO ₂) / 20 (MAG)	○	◎						3	
20 YT-20ES4	200	Air-cooled	50 (CO ₂) / 25 (MAG)		○	◎	○	○			3	
21 YT-35EE4	350	Air-cooled	20 (CO ₂) / 20 (MAG)			○	○	◎			3	Lightweight type
22 YT-35ES4	350	Air-cooled	45 (CO ₂) / 35 (MAG)			○	○	◎			3	
23 YT-35ESG4	350	Air-cooled	20 (Pulsed MAG) / 45 (CO ₂) / 35 (MAG)			○	○	◎			3	For pulse welding
24 YT-35EEM4	350	Air-cooled	20 (CO ₂) / 20 (MAG)			○	○	◎			4.5	Lightweight type
25 YT-35ESM4	350	Air-cooled	45 (CO ₂) / 35 (MAG)			○	○	◎			4.5	

Note: 2 drive 4 roll wire feeder is required to use 4.5 m Euro-connector type torch.

■For Aluminum CC Fitting Connection Type

Model No.	Rated current (A)	Cooling type	Duty cycle (%)	Applicable Wire Diameter (mm)						Cable Length (m)	Remarks	
				0.6	0.8	0.9	1.0	1.2	1.4			1.6
26 YT-20MD2	200	Air-cooled	30 (Pulsed MIG) / 60 (MIG)				○	◎			3	
27 YT-30MD2	300	Air-cooled	30 (Pulsed MIG) / 50 (MIG)				○	◎		○	3	
28 YT-40MDW2	400	Water-cooled	60 (Pulsed MIG) / 100 (MIG)					◎		○	3	
29 YT-50MDW2	500	Water-cooled	60 (Pulsed MIG) / 80 (MIG)					○		◎	3	

Euro-Connector Type

Model No.	Rated current (A)	Cooling type	Duty cycle (%)	Applicable Wire Diameter (mm)						Cable Length (m)	Remarks	
				0.6	0.8	0.9	1.0	1.2	1.4			1.6
30 YT-20MF2	200	Air-cooled	30 (Pulsed MIG) / 60 (MIG)				○	◎			3	
31 YT-30MF2	300	Air-cooled	30 (Pulsed MIG) / 50 (MIG)				○	◎		○	3	
32 YT-40MFW2	400	Water-cooled	60 (Pulsed MIG) / 100 (MIG)					◎		○	3	
33 YT-50MFW2	500	Water-cooled	60 (Pulsed MIG) / 80 (MIG)					○		◎	3	

■Special Torches for 350GZ4 (CC Fitting Type with 3-Pin Connection Torch Switch Cable)

Model No.	Rated current (A)	Cooling type	Duty cycle (%)	Applicable Wire Diameter (mm)						Cable Length (m)	Remarks	
				0.6	0.8	0.9	1.0	1.2	1.4			1.6
34 YT-20CS4TAB	200	Air-cooled	50 (CO ₂) / 25 (MAG)		○	◎	○	○			3	
35 YT-35CE4TAB	350	Air-cooled	20 (CO ₂) / 20 (MAG)			○	○	◎			3	Lightweight type
36 YT-35CS4TAB	350	Air-cooled	45 (CO ₂) / 35 (MAG)			○	○	◎	○		3	

■Optional Resin Liners for Stainless Steel Welding

Torch	Wire	0.8 mm Solid	0.9 mm Solid/FCW	1.0 mm Solid	1.2 mm Solid/FCW	1.6 mm Solid/FCW
YT-18CSC4	Supplied	—	—	—	—	—
YT-18CS4	WSTDT00057	—	—	—	—	—
YT-20CS4	—	TDT00371	TDT00371	TDT00345	—	—
YT-35CE4	—	TDT00371	TDT00371	TDT00345	—	—
YT-35CS4	—	TDT00362	TDT00362	TDT00350	—	—
YT-50CE4	—	—	—	TDT00350	TDT00364	—
YT-50CS4	—	—	—	TDT00350	TDT00364	—
YT-35CSG4	—	TDT00362	TDT00362	TDT00350	—	—
YT-50CSG4	—	—	—	TDT00350	—	—

■Optional R Tips for Stainless Steel Welding

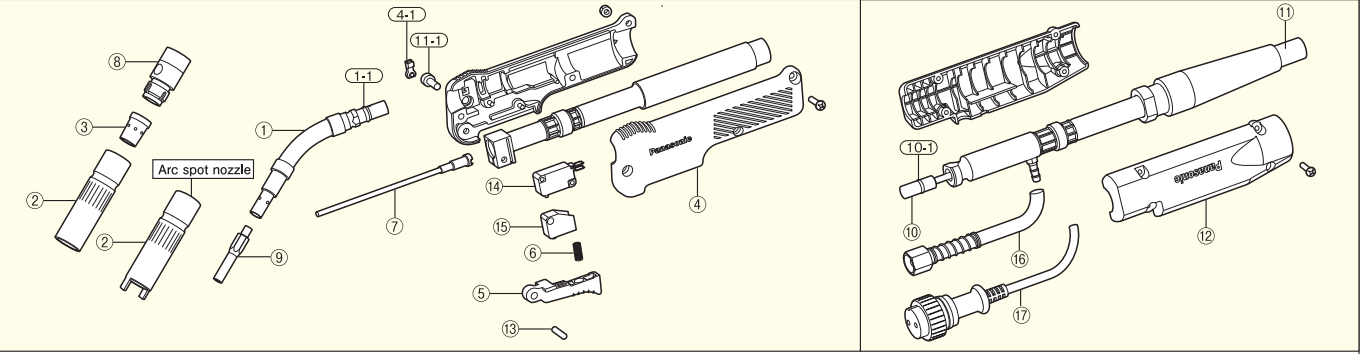
0.8 mm Solid	0.9 mm Solid/FCW	1.0 mm Solid
TET00842	TET00959	TET01068
1.2 mm Solid	1.6 mm Solid/FCW	
TET12003	TET01692	

Note: Torches are equipped with parts for the wires of "◎" diameter. Optional parts are required to use the wires of "○" diameters.

*Rated duty cycle is based on IEC 60974-7. **A special wire feeder is required to use a 6 m torch.

Consult us before using 0.6 mm mild steel wire. *Optional R tips and resin liners are recommended for higher welding performance.

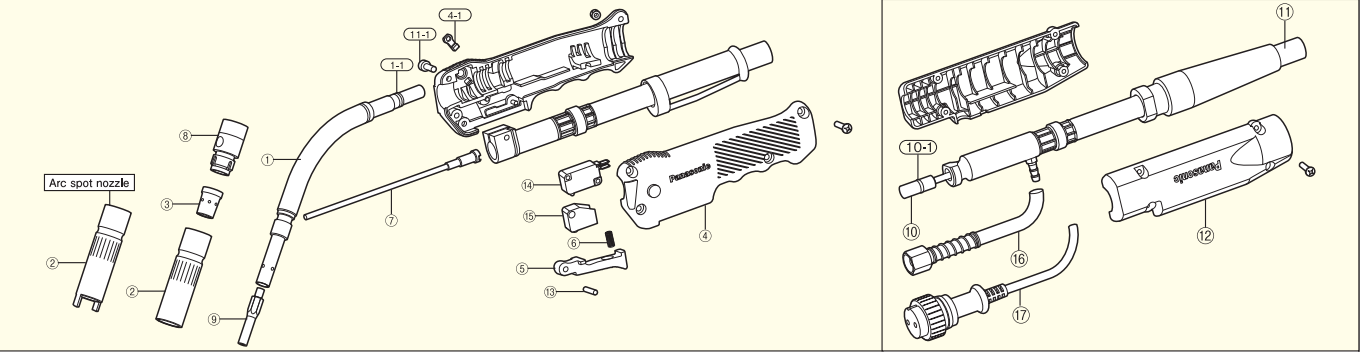
●YT-18CS4 ●YT-20CS4 ●YT-35CE4 ●YT-35CEM4 (CC fitting connection type)



No.	Part Name	YT-18CS4	YT-20CS4	YT-35CE4	YT-35CEM4
1	Torch body	TCU20111		TCU35056	
1-1	O-ring	P8V			
2	Nozzle	TGN01208		*TGN00044 (S1)	
	Arc spot nozzle	—		TGN00043 (S2)	
3	Orifices	—		*TGN01615	
4	Handle S	TKC00030			
4-1	Packing	TZV00002			
5	Switch lever S	THL00013			
6	Switch spring	TBN00003			
7	Inner tube	TGT00606	TGT00607	TGT00608	
8	Insulator	TFZ35101			
9	Contact tip	*TET00630(0.6 mm)		*TET00958(0.9 mm)	
		TET00841 (0.8 mm)		*TET01067 (1.0 mm)	
10	Liner	—		TET01296 (1.2 mm)	
10-1	O-ring	P8			
11	Power cable	TDX00240	TDX00242	TDX00243	TDX00255
11-1	Clamping bolt	TMB00503			
12	Protection tube	TFP00018			
13	Pin	XPJ4B18FJ			
14	Micro switch	YTA16 (AM59356A)			
15	Switch cover	TSK50102			
16	Gas hose assy	TWG18102			
17	Control cable assy	TWU18102			

*Optional parts

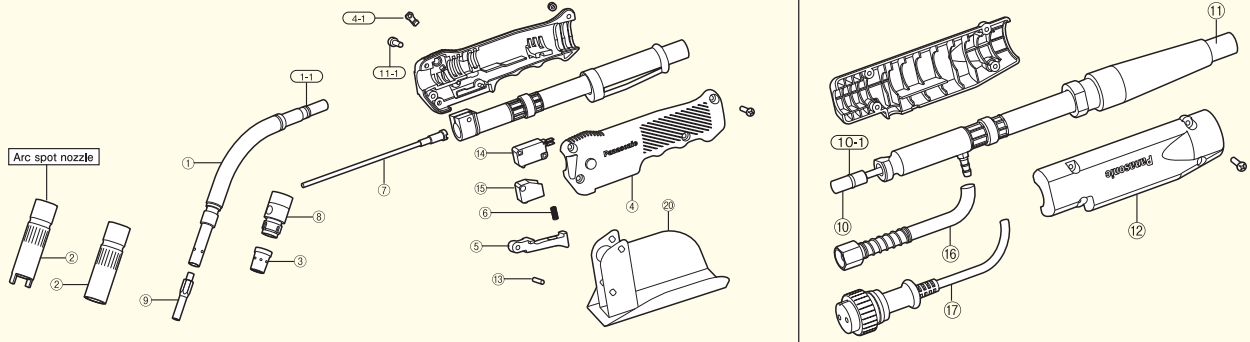
●YT-35CS4 ●YT-35CSM4 ●YT-35CSL4 ●YT-35CH4 ●YT-35CHM4 ●YT-35CHL4 (CC fitting connection type)



No.	Part Name	YT-35CS4	YT-35CSM4	YT-35CSL4	YT-35CH4	YT-35CHM4	YT-35CHL4
1	Torch body	TCU35022					
1-1	O-ring	P8V					
2	Nozzle	*TGN00044 (S1)					
	Arc spot nozzle	TGN00043 (S2)					
3	Orifices	*TGN01615					
4	Handle C	TGR01001					
4-1	Packing	TKC00029					
5	Swirch lever C	TZV00002					
6	Switch spring	THL00002					
7	Inner tube	TBN00003					
8	Insulator	TGT00609					
9	Contact tip	*TET00958 (0.9 mm)		—		*TET00958 (0.9 mm)	
		*TET01067 (1.0 mm)		—		*TET01067 (1.0 mm)	
10	Liner	TET01296 (1.2 mm)					
		*TET01447 (1.4 mm)					
10-1	O-ring	P7					
11	Power cable	TDX00234	TDX00246	TDX00249	TDX00267	TDX00268	TDX00269
11-1	Clamping bolt	XVE5A15					
12	Protection tube	TFP00018					
13	Pin	XPJ4B18FJ					
14	Micro switch	YTA16 (AM59356A)					
15	Switch cover	TSK50102					
16	Gas hose assy	TWG18102					
17	Control cable assy	TWU18102					

*Optional parts

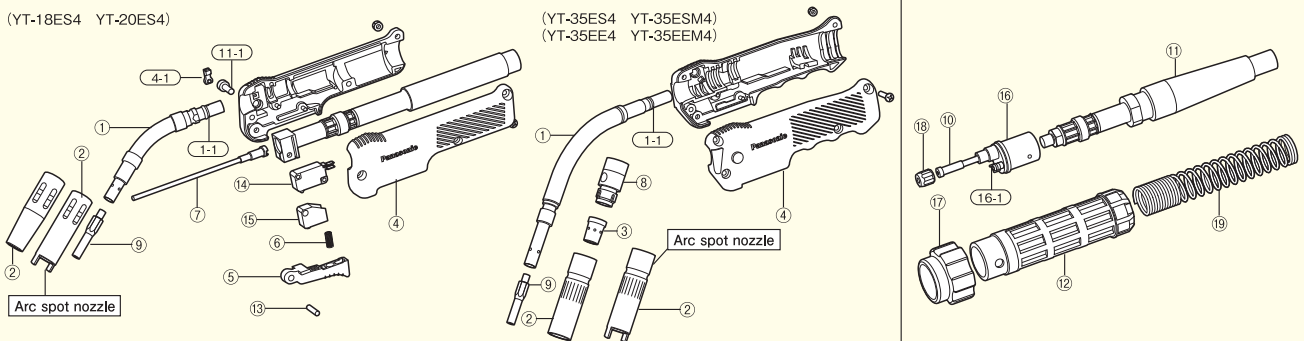
●YT-50CE4 ●YT-50CEM4 ●YT-50CEL4 ●YT-50CS4 ●YT-50CSM4 ●YT-50CSL4 (CC fitting connection type)



No.	Part Name	YT-50CE4	YT-50CEM4	YT-50CEL4	YT-50CS4	YT-50CSM4	YT-50CSL4
1	Torch body		TCU43112			TCX00006	
1-1	O-ring				P8V		
2	Nozzle		TGN00043 (S2)			TGN00056 (S3)	
	Arc spot nozzle		*TGN01615			—	
3	Orifices		TGR01001			TGR00902	
4	Handle C				TKC00029		
4-1	Packing				TZV00002		
5	Switch lever C				THL00002		
6	Switch spring				TBN00003		
7	Inner tube		TGT00035			TGT00033	
8	Insulator		TFZ35101			TFZ50107	
9	Contact tip				*TET01296 (1.2 mm) TET01447 (1.4 mm) *TET01691 (1.6 mm)		
10	Liner	TDT00262 (S121) *TDT00263 (S161)	TDT00265 (S121) *TDT00267 (S161)	TDT00266 (S121) *TDT00268 (S161)	TDT00263 (S161)	TDT00267 (S161)	TDT00268 (S161)
10-1	O-ring				P7		
11	Power cable	TDX00267	TDX00268	TDX00269	TDX00238	TDX00251	TDX00253
11-1	Clamping bolt				XVE5A15		
12	Protection tube				TFP00018		
13	Pin				XPJ4B18FJ		
14	Micro switch				YTA16 (AM59356A)		
15	Switch cover				TSK50102		
16	Gas hose assy				TWG18102		
17	Control cable				TWU18102		
20	Arc cover				*TKA50117		

*Optional parts

●YT-18ES4 ●YT-20ES4 ●YT-35EE4 ●YT-35EEM4 ●YT-35ES4 ●YT-35ESM4 (Euro connector type)



No.	Part Name	YT-18ES4	YT-20ES4	YT-35EE4	YT-35EEM4	YT-35ES4	YT-35ESM4
1	Torch body		TCU20111		TCU35056		TCU35022
1-1	O-ring				P8V		
2	Nozzle		TGN01208			*TGN00044 (S1) TGN00043 (S2)	
	arc spot nozzle		*TGN01210			*TGN01615	
3	Orifices					TGR01001	
4	Handle C			TKC00030			TKC00029
4-1	Packing				TZV00002		
5	Switch lever C			THL00013			THL00002
6	Switch spring				TBN00003		
7	Inner tube	TGT00606	TGT00607		TGT00608		TGT00609
8	Insulator					TFZ35101	
9	Contact tip	*TET00630 (0.6 mm) TET00841 (0.8 mm)	*TET00841 (0.8 mm) TET00958 (0.9 mm)		*TET00958 (0.9 mm) *TET01067 (1.0 mm) TET01296 (1.2 mm)		*TET00958 (0.9 mm) *TET01067 (1.0 mm) TET01296 (1.2 mm)
10	Liner	TDT00269 (081)		TDT00271 (122)		TDT00274 (123)	*TDT00281 (093) TDT00273 (123)
11	Power cable	TDX00261	TDX00085	TDX00096		TDX00097	TDX00237 TDX00248
11-1	Clamping bolt		TMB00503				XVE5A15
12	Protection tube				YTA1 (BW0195)		
13	Pin				XPJ4B18FJ		
14	Micro switch				YTA16 (AM59356A)		
15	Switch cover				TSK50102		
16	Connection body				TFM00095		
16-1	O-ring				SS4.5		
17	Adapter nut				YTA2 (BW0020)		
18	Liner nut				YTA3 (FA0026)		
19	Protection spring				YTA4 (EA0342)		

*Optional parts